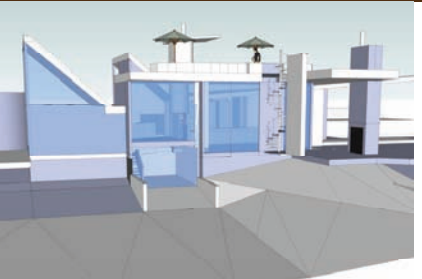


People's Choice Awards 2009



UNBUILT COMMERCIAL INTERIOR RESIDENTIAL



FUN IN THE SUN
ARCHITECT: Chuck Bailey Architect

A sun filled house in the woods. The design maximized solar orientation, and includes domestic hot water & floor heating system with sloped Structural Insulated Panel roofs. The S.I.P.s are used as a thermal mass and storm water management system.



DUVALL LAW BUILDING
ARCHITECT: Nir Pearlson

The 100-year-old downtown commerce building was nicely transformed into law office suites and common areas. The design maximized daylight as much as possible for the six law offices along the north wall.



THURSTON ELEM. SCHOOL
ARCHITECTS: Mahlum & Robertson Sherwood Architects, PC

Designed as a prototype, some key goals for the project include providing a welcoming environment that encourages learning; the integration of energy saving features that serve as learning tools; and creating a social center for the community.



REINHART / GRAY RESIDENCE
ARCHITECT: Nir Pearlson

A new 2-story residence and a garden guest-cottage replaces the former. The house provides a link between interior spaces and the exterior. The open-plan design results in spacious, airy and daylit interiors, with multiple links to the outdoors.

MULTI-FAMILY HOUSING PUBLIC / INSTITUTIONAL COMMERCIAL LANDSCAPE RESIDENTIAL LANDSCAPE



EAST BLAIR HOUSING CO-OP
DESIGNER: Willard C. Dixon

The Co-op is a family-friendly housing community with strong ties to their Whiteaker neighborhood; it is a limited equity cooperative geared as a transitional opportunity for low-income people who are either severely under-housed or without housing.



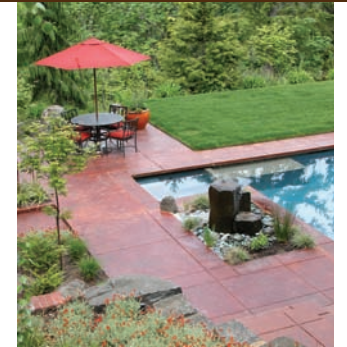
EUGENE STATE OFFICE BLDG.
ARCHITECT: PIVOT Architecture

Prior to renovation, the building was a nondescript structure in downtown Eugene. The design sought to transform the dated structure into a contemporary office building, providing pleasing work environments utilizing sustainable strategies.



SLOCUM CENTER
LANDSCAPE ARCHITECT: Cameron, McCarthy Gilbert Scheibe

The development of the entire Slocum Center campus was guided by principles embodying a conscientious approach to energy, environmental design, and construction. Awarded a LEED GOLD rating upon completion in 2008.



THREE R'S MAKE A WRIGHT: RESTORE, RECYCLE, REVITALIZE
LANDSCAPE ARCHITECT: Stangland & Associates Inc.

The re-design of the pool and sequence up to the house. New terraces, wandering walkways and stormwater swales were a large part of the project, marrying a Frank Lloyd Wright house-plan to a hillside landscape with a view.